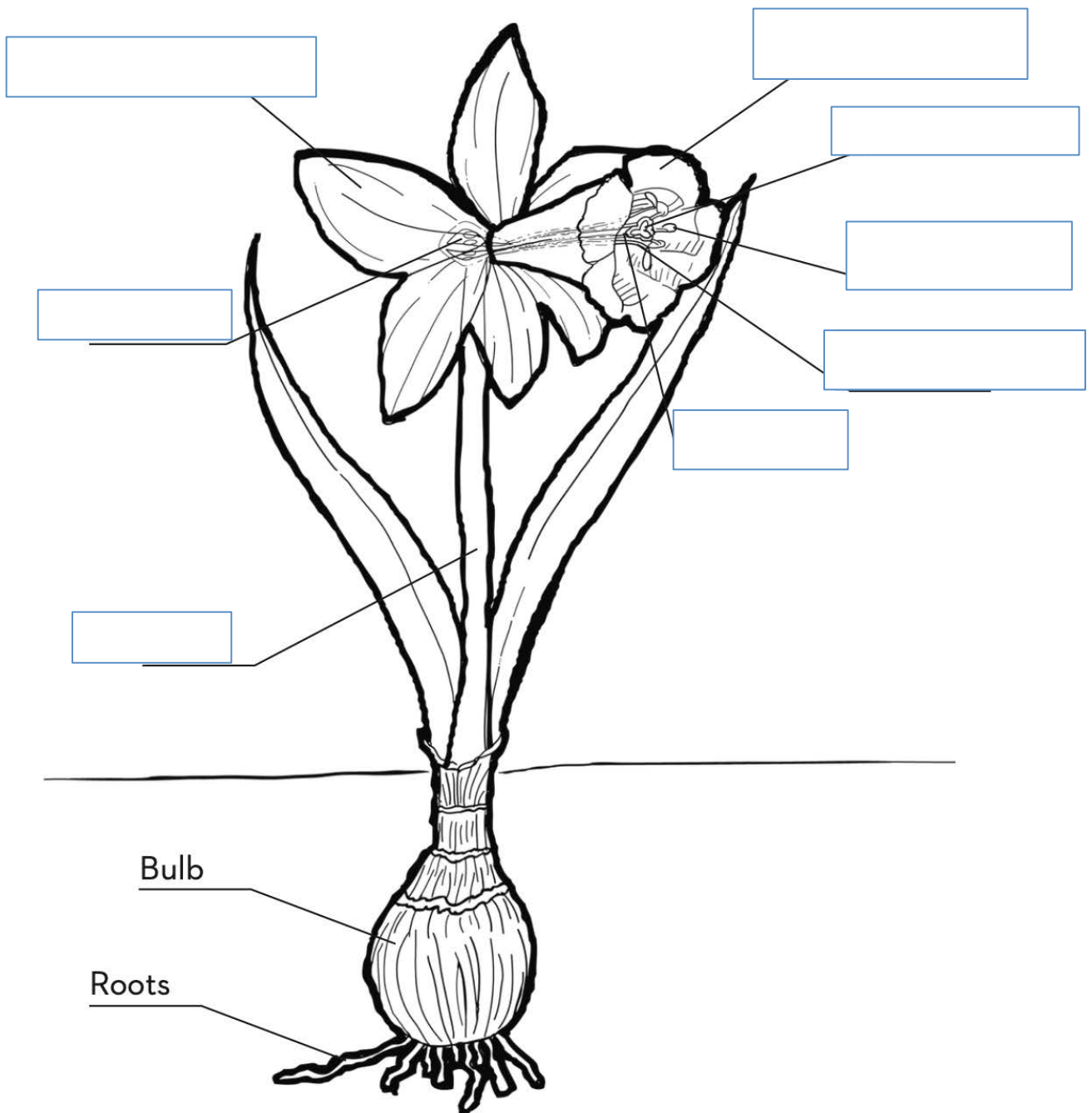


## Parts of a Flower & Definitions

# spring flowers

Daffodil



- **Petal:** attracts insects, birds, and animals
- **Sepals:** protects the flower during bud stage
- **Anther:** male reproductive part that contains the pollen
- **Filament:** male reproductive part that supports the anther
- **Stamen:** male reproductive part, the anther and filament together
- **Stigma:** female reproductive part that is a sticky surface which catches and holds the pollen    **Style:** female reproductive part that supports the stigma
- **Ovary:** female reproductive part at the base of the style which contains the **Ovules**
- **Ovules:** female sex cells which develop into fruit    **Pistil:** female reproductive part that contains the stigma, style, and ovary

# spring flowers

Daffodil

